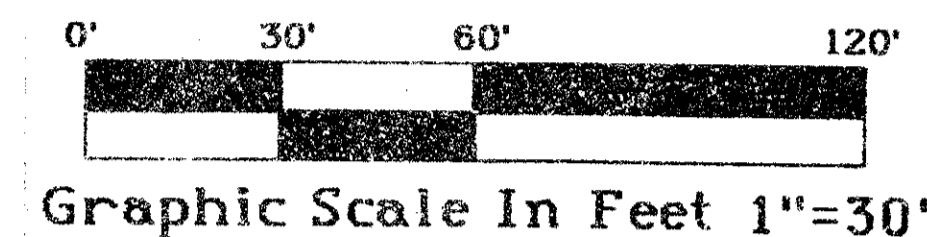


GREATER BOYNTON PLACE

-A Part Of Sun Valley, A Planned Unit Development, Lying In Section 26, Township 45 South, Range 42 East-
Being A Replat Of Portions Of Tracts 45 Through 48, Inclusive, Subdivision Of Section 26, Plat Book 6, Page 26, Public Records Of Palm Beach County, Florida
March, A.T., Nineteen Hundred Eighty Seven

State of Florida)
County of Palm Beach)
This Plat was filed for record at _____ this _____ day of _____, A.D., 1987, and duly recorded in Plat Book _____ on Pages _____
John S. Dunkle,
Clerk of the Circuit Court.
By _____ Deputy Clerk.

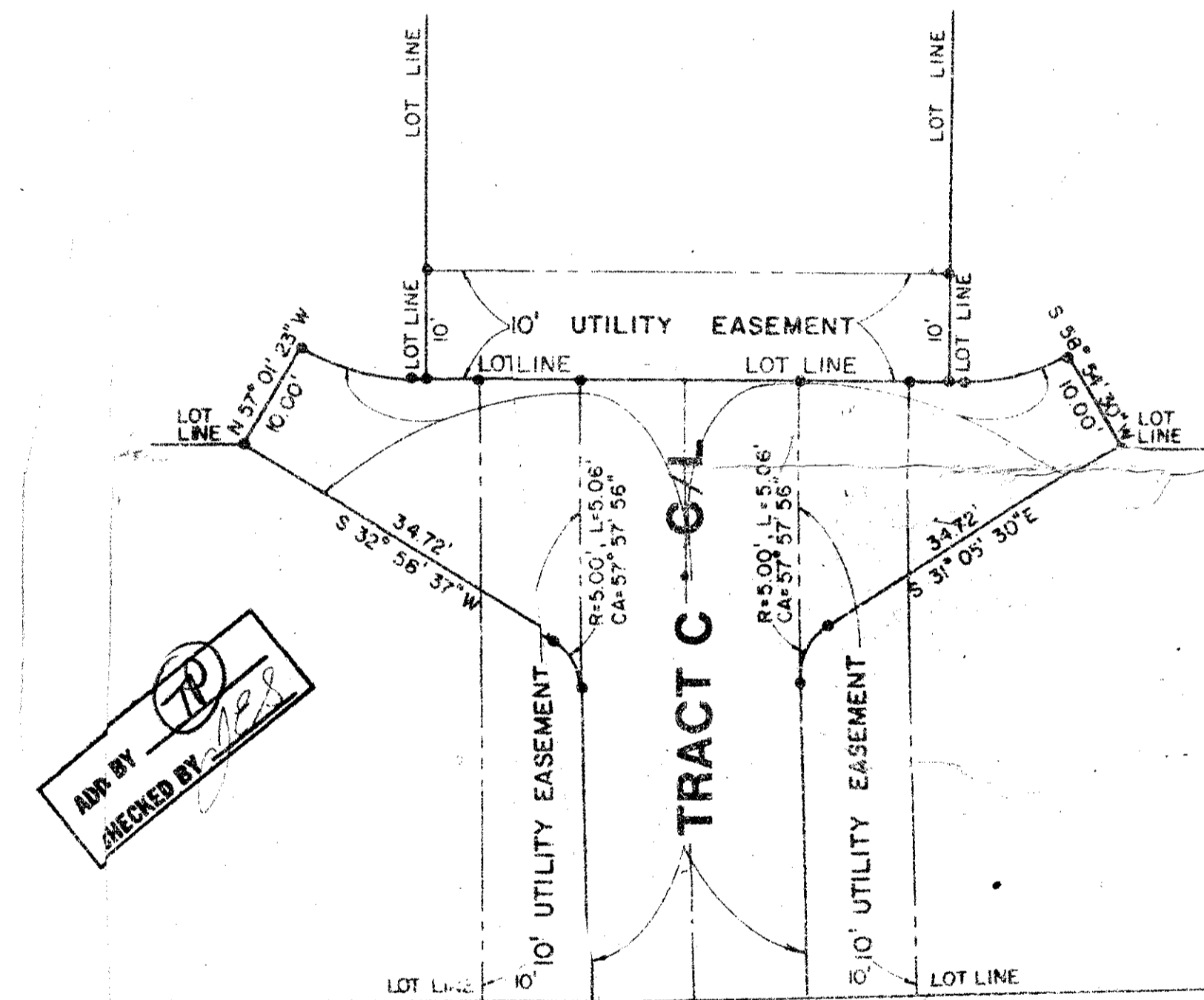


Match Line
See Sheet 5 Of 7

Match Line
See Sheet 2 Of 7

Match Line
See Sheet 2 Of 7

Match Line
See Sheet 7 Of 7

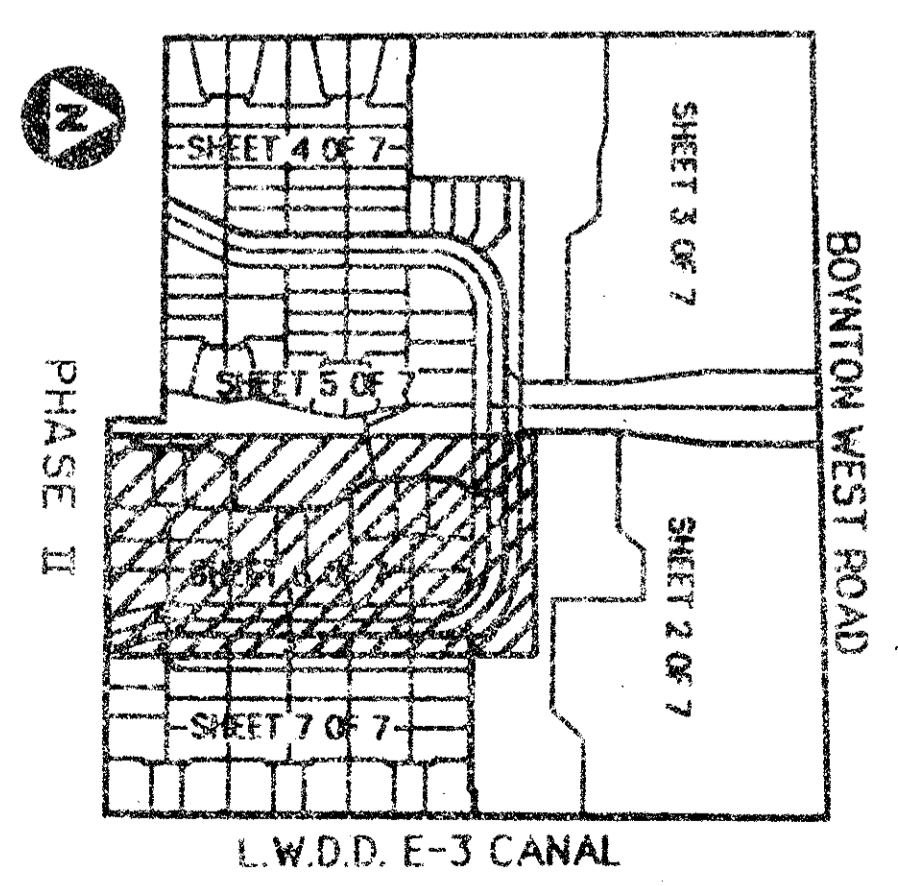
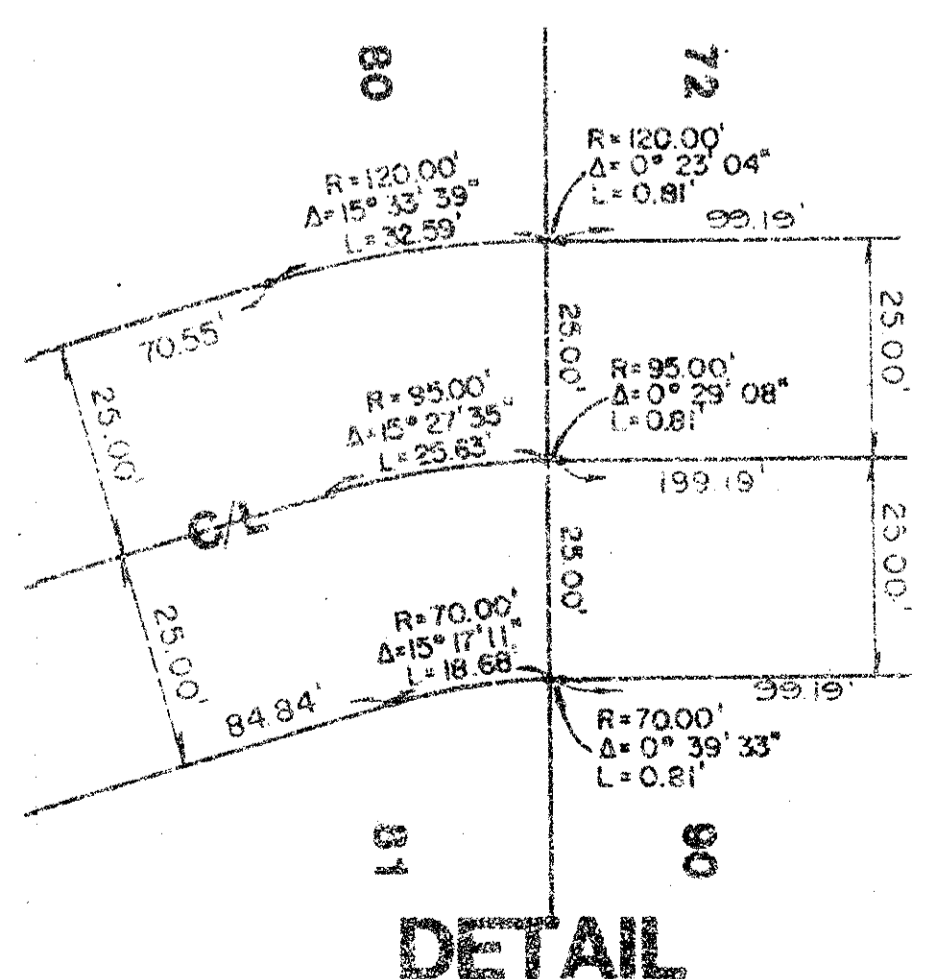
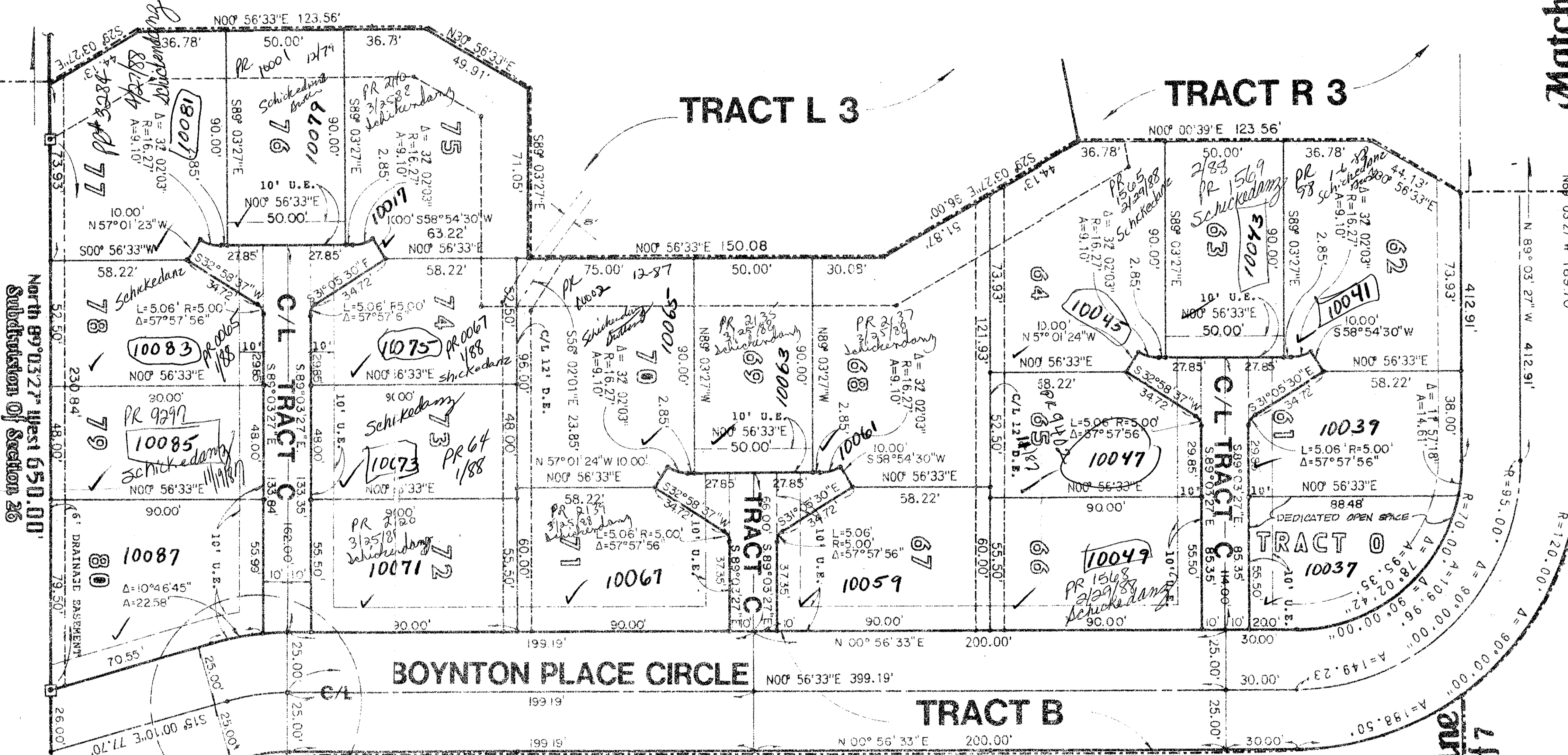


Legend:

- ⊙ - Denotes a permanent reference monument (P.R.M.)
- ⊙ - Denotes a permanent control point (P.C.P.)
- D.E. - Denotes a drainage easement.
- U.E. - Denotes a utility easement.
- L.A.E. - Denotes a limited access easement.
- L.M.E. - Denotes a lake maintenance easement.
- A.U. & D.E. - Denotes an access, utility and drainage easement.

0498-004

Subdivision of Greater Boynton Place
BOOK 57
PAGE 141
FLOOD MAP # 1908
ZONING RS
SE PUB 33
ZIP CODE 33437
FWD NAME
TRAZ 144
2615742



Note:
Ownership of lots in this portion of Greater Boynton Place is subject to the provisions of the Declaration Of Restrictive Covenants of The Courts At Boynton Place, including the provisions of The Courts At Boynton Place Sub-Association, Inc., a Florida non-profit corporation, and the by-laws thereof.

GREATER BOYNTON PLACE 57/141

This instrument was prepared by Wm. G. Van Campes, R.L.S., in and for the offices of Beach Mark Land Surveying and Mapping, Inc., 4152 West Blue Heron Boulevard, Suite 121 Riviera Beach, Florida, 33404. Phone: (305) 848-2107